

# JUNEAU SYMPHONY CLEF NOTES

The Newsletter for Juneau Symphony Musicians

Dear Musicians,

We hope this finds you well, carrying on the best you can during these crazy times! Hopefully it won't be long until we can gather again in greater numbers to make music together.

The PRDC has been busy this year. Already we've met ten times since early January to review the results of the 2020 Musician Survey. Nearly 400 comments were received for the narrative-response questions! Thanks to all who responded to the survey, with many well-reasoned and useful comments.



The Survey Report was made available on the new password-protected page of the Juneau Symphony website in mid-March. This new page is also the portal where musicians can access the Juneau Symphony bylaws and policies. Based on a best-practice survey of other symphonies, it was determined that a password-protected page would be the most appropriate placement for these documents. Contact the office if you've lost track of the password.

The PRDC will present recommendations based on the survey to the Board at their April meeting, and the Board has committed to a review of these recommendations during their spring and summer planning sessions. Meanwhile, the PRDC will develop additional committee-level recommendations which can be implemented by the PRDC.

Again, thanks to all who took the time to participate in the survey. The amount of time PRDC volunteer members are putting into the process demonstrates that we take your input very seriously. We are hopeful that by using this non-performance time for planning, we will strengthen the Juneau Symphony for the challenges to come. Following up on one survey idea, we hope you'll tune up your instruments for summer reading sessions in well-ventilated spaces - more info will be coming soon!



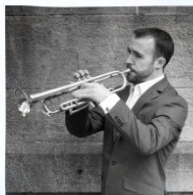
# At Home with the Juneau Symphony

Partnering with KTOO to bring high-quality concerts into your home.

## Strings and Friends

Mendenhall Glacier Visitor Center,  
Tongass National Forest  
String quartet and featured soloists

April 4  
New premiere  
date!



Jeff Karlson

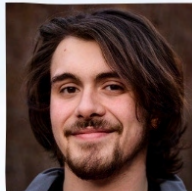


Roger Schmidt

Compositions by  
Naruda  
Beethoven  
Boccherini  
Albrechtsberger  
Fux



John Unzicker



Colton Welch



Mina Brooks-Schmidt

## Sundays at 3pm

Each household subscription includes three concerts and pre-concert talks. Concert productions available for unlimited viewing the two weeks following each premiere.

## Serene Contemplations - April 18

Holy Trinity Episcopal Church  
Voice, organ, and string quartet  
Including works by Handel, Haydn, and Mozart



Sue Kazama



Sara Radke-Brown

3-concert series: \$60 per household  
Additional gift subscriptions for \$30 each

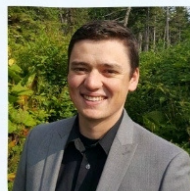
To purchase, visit [JuneauSymphony.org](http://JuneauSymphony.org)  
or call 907-586-4676

## Festive Finale - May 16

Featuring string quartets and brass performers  
including horn, trombones, and tuba



Kristina Paulick



Alan Young



The Juneau Symphony String Quartet  
Meghan Johnson, Lisa Ibias, Franz Felkl, Lindsay Clark



### *Welcome, Jetta!*

The Player Relations and Development Committee (PRDC) is pleased to welcome Jetta Whittaker as an at-large member of the committee. We are fortunate that Jetta is willing to serve, filling our recent vacancy. PRDC elections for all seats will be held next fall!



### *Thank you, Sharon Barton!*

Sharon Barton was recently named a Lifetime Member of the Juneau Symphony. Sharon served several Board terms, contributing her knowledge of human resources and general management to the Board. Most recently, she led the annual auction and helped transition to a successful virtual auction. Thank you, Sharon!

### Seeking submissions for **"Getting to know your Juneau Symphony"**

We'd love to give the JS family an opportunity to get to know our players better. Please consider filming a short segment about yourself that we can share on our Facebook page and website.

A little guidance...

We'd like you to make a 2-3 minute video that would help us all get to know you better.

Name, instrument, seat in the orchestra, what got you interested in music? How long have you played?

What do you do outside of the Juneau Symphony? What are some of your favorite pieces? Play a sample or not. Show your instrument. Tell us anything special about it. What do you like about playing in the Juneau Symphony?

You could be in your home, outside, on a trail, on the water, with a pet... whatever is a best representation of you.

Questions? Email [charlotte@juneausymphony.org](mailto:charlotte@juneausymphony.org)





THE JUNEAU SYMPHONY



# SUMMER STRINGS CAMP

August 2-6, 2021

Day camp at Eaglecrest Ski Area

**SAVE THE DATE!**  
**REGISTRATION OPENS APRIL 5**

The five-day camp will include music classes and daily outdoor activities. Open to string students who have finished 2nd-6th grades. Transportation and lunch are included. Tuition: \$200. Scholarships available. Camp limited to 30 students. A second camp may be added based on interest.

To register, visit: [JuneauSymphony.org](http://JuneauSymphony.org)

Presented in partnership with:



First Student



This program is partially funded by the citizens of the City and Borough of Juneau through sales tax revenues





Thank you for tuning in to the "Sundays with the Symphony" broadcasts on KRNN, which have been aired weekly for more than a year now!

If you haven't been able to listen in, there's good news - the recordings are available on-demand at the JS website!

**[CLICK HERE!](#)**



## **KUDOS FRANZ!**

**Thanks for all your hard work on the virtual season, fall Zoom classes, radio broadcasts and summer camp! And congrats to Franz and Katlyn on the birth of baby Porter!**

### **JS Player Relations & Development Committee**

Alyson Cooper,  
Amy Lujan, Sharon Seim,  
Ken Truitt, Wilson Valentine,  
Colton Welch, Jetta Whittaker

**[jsplayerrelations@gmail.com](mailto:jsplayerrelations@gmail.com)**

Follow the Juneau Symphony on  
Facebook and join the JS Musicians  
Facebook Group



**Juneau Symphony**

**Office Contact:**

**[info@juneausymphony.org](mailto:info@juneausymphony.org)**

**907-586-4676**