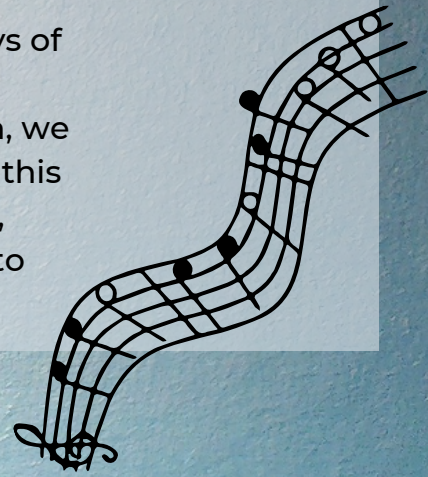


# JUNEAU SYMPHONY CLEF NOTES

The Newsletter for Juneau Symphony Musicians

Dear Musicians,

Happy summer everyone! We hope you have been able to enjoy days of near endless light and all the indoor and outdoor opportunities the season brings. After a great "Oscar-worthy" finale to the 59th season, we look towards our "Epic" 60th season under the baton of Dr. Koch. In this issue of Clef Notes we preview the season, upcoming special events, provide information you need to know, and more. We look forward to celebrating 60 years and making beautiful music together!



**JS**60  
Years

## THE JUNEAU SYMPHONY WILDLIFE CRUISE

**August 27, 2:00pm**  
**Statter Harbor**

3-hour cruise  
Live music  
Hors d'oeuvres  
Wine tasting



**JS** THE  
JUNEAU  
SYMPHONY

specialty  
imports

**Allen Marine**  
Explore with the Allen

Tickets \$115 at [JuneauSymphony.org](https://JuneauSymphony.org)



***Great fun during  
the June concerts!***



***And terrific audience feedback too!***



**60th  
Season  
Preview**

***Dr. Koch and the Board have announced the following programs for the 60th season:***

**October 22 & 23, 2022 – Stories** [rehearsals start Oct. 6]

Sibelius - Finlandia  
John Psathas - Omnifenix  
Rimsky-Korsakov - Scheherezade

**December 10 & 11, 2022 - Holiday Cheer** [rehearsals start Nov. 29]

Juneau Symphony, Sitka Fine Arts Camp Holiday Brass, Vox Borealis  
Various holiday favorites for orchestra first half/brass collaboration second half

**January 28 & 29, 2023 – Transformations** [rehearsals start Jan. 12]

Rimsky-Korsakov – Dance of the Tumblers from The Snow Maiden  
Strauss - Death and Transfiguration  
Beethoven - Sixth Symphony

**April 1 & 2, 2023 – Summits** [rehearsals start Mar. 16]

Higdon - Teton Range  
Hindemith - Symphonic Metamorphosis  
Dvorak - Cello Concerto

**June 3 & 4 – Showdowns** [rehearsals start May 23]

Music from Lord of the Rings, Carmina Burana, West Side Story, the Mozart Requiem, Batman, Star Trek, Superman, and more

**60th  
Merch  
HERE**

**Commit to the Season Now**

Now is the time to commit to the 60th season! Review your calendars, the COVID policy (below), and make your availability known by completing this short survey. Responses due **July 29**.

**Music Already Available**

Go to the Member Musicians website page and click on Parts under Resources from Dr. Koch. All music will be available online August 15, and hard copies will be ready by September 1.



## Board Policy Updates

**COVID:** The Board recently adopted the following revised COVID policy:

"To be eligible to play in a Juneau Symphony concert, either mainstage or special event, a musician must show proof of vaccination, including the most recent booster the musician is medically eligible to receive, or have a note from a medical doctor or other medical expert. For the 2022-23 season this policy applies for each concert cycle of the season. If a musician becomes eligible for an additional booster during the season, the musician is expected to receive that booster and show proof. This policy is subject to change, depending on local and national circumstances related to the pandemic."

**Musician Membership:** At their June meeting, the Board passed a motion about musician membership. Member musicians have been defined as any player who has played in two or more concert cycles over the previous 24 months. With the current change, the Board has effectively "reset the clock" to make membership as inclusive as possible given the disruptions of the pandemic. The change accomplishes two things: 1) it holds musicians harmless if they did not perform since January 2020, and 2) it expands musician membership to include any current or new players who performed in a virtual concert or live performance during the 20-21 and 21-22 seasons:

"All players who were members at the January 2020 concert will remain members through June 2022. In addition, anyone who has played in the Juneau Symphony sponsored virtual events or live Juneau Symphony concerts, will be given credit toward membership for those concerts."

*Thanks to all member musicians who commented on the the Player Relations and Development Committee (PRDC) revised DRAFT handbook. Comments were integrated and the Board will review the DRAFT at their August 10 meeting.*

*The Symphony is updating records and getting all of our customer and musician information in one place!! We need all musicians to update their information on [TicketSearch](#).*

THANK  
YOU

Board members!



## Sue Kazama

### ***How long have you played with the Juneau Symphony?***

Over 40 years. I'm not sure when my first concert was but it was early in Mel Flood's time as conductor.

### ***How long have you been playing your instrument, and why did you pick that one?***

I've been playing piano for 65 years after playing around on my grandfather's piano when I was very young. I played many other instruments through the years but always came back to the piano as the very best one!

### ***What was your most formative musical experience?***

I had a wonderful summer when I was 15 at a music camp in Victoria, B.C. That's when I got serious about practicing and performing. I was exposed to other serious musicians and inspired to work hard.

### ***When you aren't playing your instrument, how do you spend your time?***

I like to travel, spend time outdoors, and swim at the beach in Hawaii, where I spend quite a bit of time!

### ***What is the one thing you want people to know about you?***

God has given me a wonderful gift, plus the love of playing with others. I always hope that I will help the ones I play with sound better than they would without me!!

## MUSICIAN SPOTLIGHT

**60th Anniversary:  
Let the celebration begin!**



*Thank you for your  
years of dedication!*

## ***Don't miss out on these fun opportunities and events:***

- August 1 - deadline to order free member musician t-shirt
- August 29 - deadline to purchase logo merchandise
- September 2, 4-7 PM - 60th Club Launch Party @ Annie Kaill's
- October 15 - Roaring 20's Anniversary Gala





## THE JUNEAU SYMPHONY



**PRELUDE ORCHESTRA**  
MUSIC DIRECTOR FRANZ FELKL

The **Prelude Orchestra** is taking a summer break and looks forward to their new season beginning in September.

This year's **String Camp** has 40 enrollees. The camp runs August 1-5 at Eaglecrest. JS musicians are invited to drop by any time to listen in and encourage the kids.



THE JUNEAU SYMPHONY

# SUMMER STRINGS CAMP



*Thank you, music educators!*

**Juneau String Ensembles'** flagship orchestra Aurora Strings recently returned from an incredible week in New York City as part of the Sounds of Summer International Music Festival. JSE board members, musicians, and families send their sincere appreciation to the Juneau Symphony's PRDC for financially supporting this trip. They also thank all the JS players who provided support and helped make the trip a success for our young Juneau musicians. Aurora Strings players gained new skills and a deeper appreciation for ensemble playing. Expect more of these musicians to be ready to join the symphony in coming years!





## *Thank you, Taylor!*

Taylor Young has taken a new job at University of Alaska Southeast. She has served as Director of Operations the past 4.5 years, helping steer us through the challenges of staff transitions, the pandemic, zoom events and meetings, and ably keeping things running behind the scenes. Her creativity, approachability, and responsiveness will be missed. Thank you for all your contributions, Taylor!

**Applications for the part-time Ops Assistant job are due August 1!**

We Are

**HIRING**



***Congratulations to our newest Lifetime Members,  
Sharon Barton and Alison Browne!***



***Thank  
you!***

***...for your many hours of service. We'll see  
you at the Symphony!***



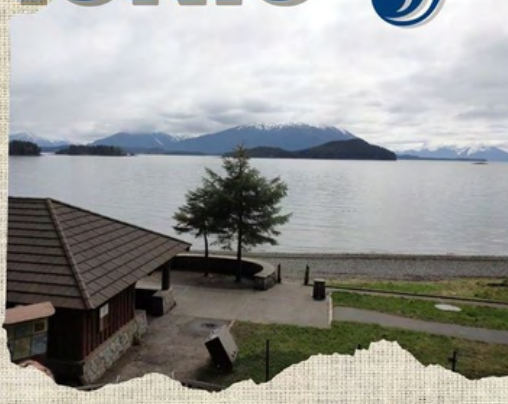
## Player Relations and Development Committee Funding Availability

The Board has provided the PRDC with a new infusion of funds to support player development opportunities. If you are interested in applying for these funds, please complete the form on the [Member Musician's webpage](#). Scroll down to "Resources from the PRDC" and select the "Funding Request" tab. Send the completed form to: [JSPlayerRelations@gmail.com](mailto:JSPlayerRelations@gmail.com).

# FALL PICNIC JS

**Saturday Sept 10**  
**4-6 PM**  
**Auke Rec**  
**Raven Shelter**

Hamburgers and beverages provided.  
Last names A-M: desserts, N-Z: sides



*Family and partners are welcome to the picnic! Please RSVP by 9/3 to [jsplayerrelations@gmail.com](mailto:jsplayerrelations@gmail.com) so we'll know how many burgers to bring.*

### Upcoming Events

- July 29**, Commitments due for 60th season
- August 1**, Ops Assistant application deadline
- August 1**, deadline to order 60th season t-shirt
- August 10**, 5:15 PM - Board meeting
- August 27**, 2 PM - Wildlife Cruise
- August 29**, deadline to purchase 60th merch
- August 31**, 5:45 PM - PRDC monthly meeting
- September 2**, 4-7 PM - 60th Club Launch Party
- September 3**, deadline to RSVP for picnic
- September 10**, 4-6 PM - fall picnic @ Auke Rec
- October 15**, Roaring 20's Anniversary Gala
- Sundays at 1 PM** - KRNN JS radio broadcasts

### JS Player Relations & Development Committee

Amy Lujan, Chair  
Lindsay Clark, Sharon Seim,  
Ken Truitt, Wilson Valentine,  
Colton Welch

[jsplayerrelations@gmail.com](mailto:jsplayerrelations@gmail.com)

Follow the Juneau Symphony on  
Facebook and join the JS Musicians  
Facebook Group



**Juneau Symphony**

**Office Contact:**

[info@juneausymphony.org](mailto:info@juneausymphony.org)

**907-586-4676**